

SCHOOL OF BIOMEDICAL ENGINEERING, SCIENCE AND HEALTH SYSTEMS

99% of Biomedical Engineering students students were employed on co-op in 2021-22

89% of these positions were paid

\$20 Reported MEDIAN hourly salary of paid co-ops from AY 2021-22

100% learn through experiential education

Students Learn Here:

Bristol Myers Squibb
Century Therapeutics
Children's Hospital of Philadelphia
DSG, Inc.
Exponent

GlaxoSmithKline
Globus Medical
Jabil
Johnson & Johnson
Merck
Moberg Analytics

Temple University School of Medicine
Terumo Medical Corporation
University of Pennsylvania
Vitara Biomedical, Inc.

Go to Steinbright and Get To Work

Steinbright's powerful combination of co-op and career services is a Drexel advantage for employment or professional experience and beyond.

From the One-Year-Out Alumni Survey, graduating class of 2021:

98% of Biomedical Engineering graduates are working or enrolled in graduate or professional education.

89% of those working full-time were satisfied with the level of responsibility at their position.

89% of those working full-time were satisfied with their position.

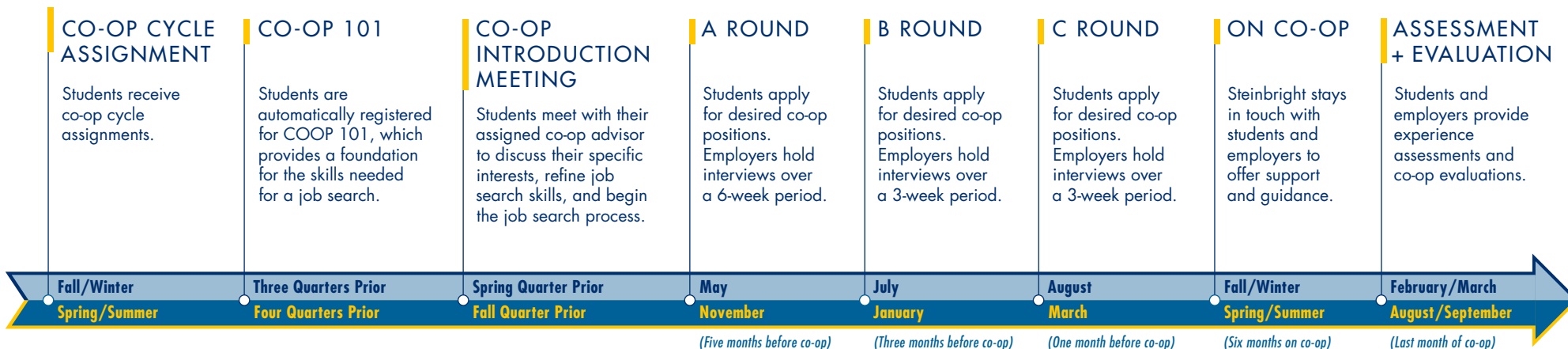
Get Connected

215.895.2185
drexel.edu/scdc

3201 Arch Street
Co-op: Annex, Suite 110
Career Services: Suite 250

SCHOOL OF BIOMEDICAL ENGINEERING, SCIENCE AND HEALTH SYSTEMS

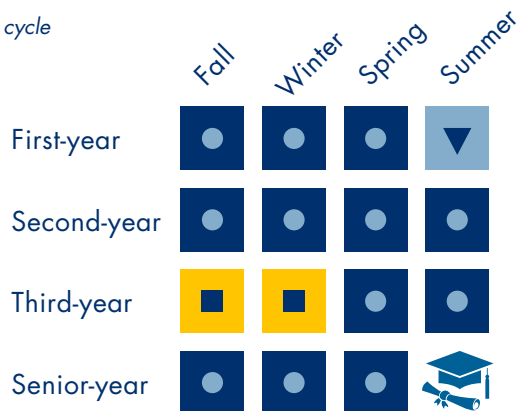
CO-OP TIMELINE



FOUR-YEAR CURRICULUM – ONE CO-OP OPTION

Sample schedule for fall/winter cycle

- on-campus study
- ▼ vacation
- co-op experience



FIVE-YEAR CURRICULUM – THREE CO-OP OPTION

Sample schedule for fall/winter cycle

- on-campus study
- ▼ vacation
- co-op experience

